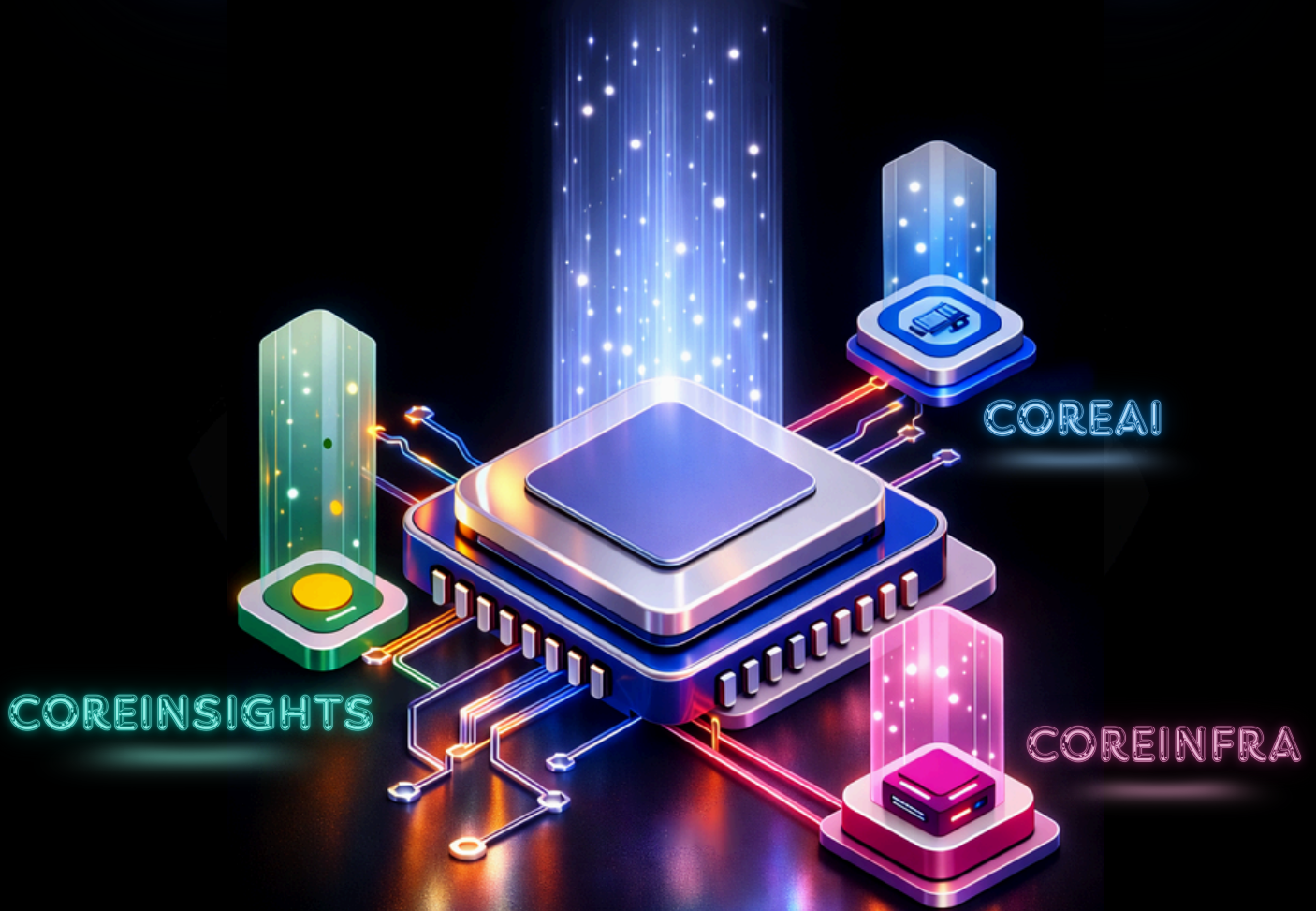


Infotrend's

CORESUIITE



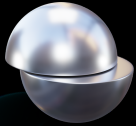
UNIFIED ECOSYSTEM & OFFERINGS
SCALABLE & FLEXIBLE SOLUTIONS
END-TO-END DATA MANAGEMENT

INFOTREND.COM/SOLUTIONS

ACCELERATE AI WITH A READY-TO-USE ML TOOLKIT

CoreAI is a Docker-based solution that provides pre-configured environments for machine learning, computer vision, and natural language processing development. It enables fast prototyping, testing, and deployment for machine learning practitioners and developers.

CoreAI Benefits



**Pre-Built
Containers**

➤ **Accelerated AI Development**
By offering pre-configured Docker containers with key AI libraries, CoreAI eliminates the time-consuming setup process, allowing developers to focus immediately on model development and experimentation.



**Multi-GPU
Support with
CUDA**

➤ **Cross Platform Compatibility**
Docker containers create a consistent development environment, which reduces the "it works on my machine" problem, enabling seamless collaboration across development teams.



**Leading AI
Frameworks**

➤ **Resource Optimization**
The integration with NVIDIA CUDA allows for efficient use of GPU resources, significantly improving the performance of computationally intensive machine learning, computer vision, and natural language processing tasks.



**Automated
Container
Builds**

➤ **Flexibility & Modularity**
Developers can easily switch between frameworks (e.g., TensorFlow and PyTorch) within the same containerized environment, supporting diverse project requirements and avoiding dependency conflicts.



**Modular
Design for
Customization**

➤ **Scalable Deployments**
The ability to containerize entire AI workflows ensures that models and applications can be deployed to cloud environments or on-premise infrastructure with minimal effort and maximum reliability.